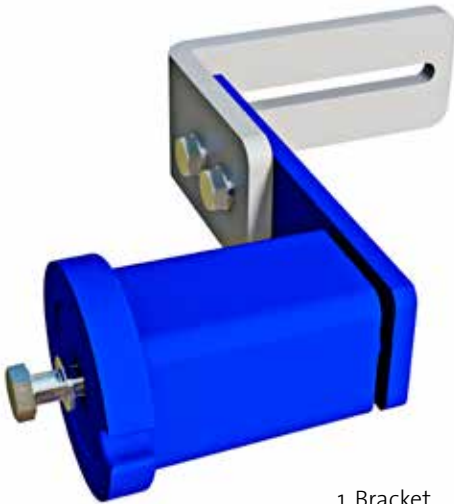
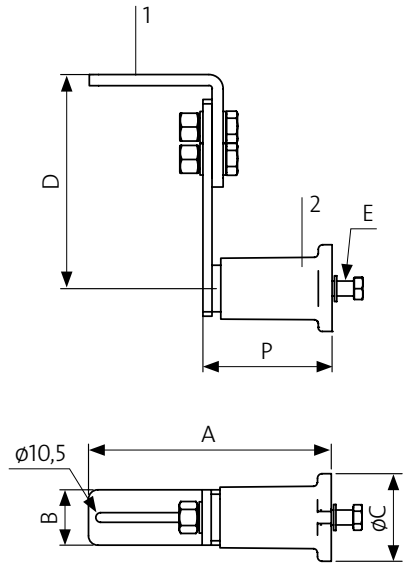


HOLDER SE



- 1. Bracket
- 2. Rosta element



HOLDER SE WITH ROSTA ELEMENTS – Easy to fit brackets and clamping element.

Holder SE with adjustable clamping element and mounting plates for ease of assembly of belt scraper. The installation dimensions can be steplessly adjusted on the mounting plate. Preload the blue clamping elements with pipe wrench – equally on each side – to the desired pressure, tighten the screws with a torque wrench.

All steel parts are electro-galvanized, except the torsion spring package which is painted as standard. There is a stainless steel alternative.

ART.NO.	ROSTA ELEMENT	BRACKET	A	B	C	D	E	F
9289	SE18	9288	210	50	60	138	M10	80
9290	SE27	9286	235	60	80	180	M12	110
9291	SE38	9287	265	60	95	232	M16	140